

Historic, archived document

Do not assume content reflects current scientific knowledge, policies, or practices.

Duple. 62.61
new

LIBRARY
RECEIVED
★ AUG 70 1920 ★
U.S. Department of Agriculture

LIBRARY
U.S. Department of Agriculture
Washington, D. C.



1911
HENDERSON'S
BULB-BARGAINS

FOR THOSE WHO PLACE THEIR ORDERS
✿ THIS SPRING ✿
FOR SHIPMENT DURING SUMMER AND FALL

☞ EVERYTHING TO GAIN--NOTHING TO LOSE ☞
by placing your order NOW. Should anything be offered
later, by us, at a lower price
WE WILL GIVE YOU THE LOWER RATE

Peter Henderson & Co.
35 & 37 CORTLANDT ST., NEW YORK.

HENDERSON'S SUPERIOR :: BULBS

—For—
Autumn Planting.

.. 1911 ..

May we book your order

=====**NOW**=====

**For Shipment as Bulbs Arrive during
Summer and Fall?**

Orders placed with us early enable us to estimate our requirements more closely, and by including your order with ours, for importation, we can afford to sell you at lower rates than in the Autumn, for the reason that when importing on a certainty, we take less risk in having a surplus left. Should we be able to offer anything at a lower rate later in the season we will give you the benefit.

Thus you have everything to gain and nothing to
lose by ordering **NOW**.

We are the Largest Importers, Dealers and Growers of Bulbs in America, and handling the unusually large quantities that we do, and being experienced Forcers and Growers ourselves, we are in consequence enabled to select superior stock at advantageous prices, allowing us to offer Superior Bulbs at reasonable rates.

REMEMBER ☹☹

The Prices of our Bulbs include

PACKING AND CARTAGE and placing free on board cars or boat in New York. You have no duty, ocean freight from Europe, nor custom house brokerage expenses to pay.

THE NUMEROUS AND FAST TRAINS to all parts of the U. S. from New York give us pronounced advantages for prompt and rapid shipping at low freight rates.

WE RESERVE THE RIGHT TO ADVANCE PRICES on any Bulbs, Roots, Plants or Seeds, before acceptance of order should crop prospects, injury in transit or any unusual conditions prevail to indicate a serious shortage.



=====**TERMS:**=====

TERMS TO PARTIES OF APPROVED CREDIT.

Accounts are due net in two months, 2% off for cash in ten days or 3% off for cash with order or before shipment.

We Deliver all Bulbs and Roots—properly packed and in good condition—into the hands of transportation companies. After that our responsibility ceases. Consignee then assumes all risks of heating, freezing and delays—P. H. & Co.

PETER HENDERSON & CO. give no warranty, express or implied, as to description, quality, productiveness or any other matter of any seeds, bulbs or plants they send out, and they will not be in any way responsible for the crop. If the purchaser does not accept the goods on these terms, they are at once to be returned.

SPECIAL NOTICE ABOUT TIME OF SHIPMENT.

When you order, please state if you wish your bulbs to be shipped as they are ready, or if we shall hold, and make one or more shipments. In absence of contrary instructions, we forward the "Early Bulbs" as soon as they are ready—we term this our "August Shipment"—this would include Liliun Harrisii and Candidum, Freesias, Roman and other French Hyacinths, Paper white and Double Roman Narcissus, Ornithogalum, forcing Anemones, Alliums and Callas.

Our "September Shipments" includes the general line of Dutch bulbs, such as Hyacinths, Tulips, Narcissus, Crocus, Liliun Longiflorum—if ready, etc.

Our "November Shipments" includes Lily of the Valley, Spirea, Gladiolus, Tuberoses, Peonias, Amaryllis, the late Lilies, etc., etc.

☞ **EASTER SUNDAY, 1912, COMES ON APRIL 7th.** ☞

HENDERSON'S SUPERIOR

Early "Roman" Hyacinths.

THE flowers, while smaller than those of the Dutch Hyacinth, yet are produced in much greater abundance—each bulb bearing several very graceful flower spikes. The delicious perfume, earliness and profusion of bloom have made Roman Hyacinths exceedingly popular; they are so easily grown and so early that if potted in August and September they can be brought into flower in November and December, and a succession can be had in bloom throughout the winter. Roman Hyacinths are not considered hardy enough for open-ground culture north of Washington, though in our grounds near New York they have proven perfectly hardy, slightly protected. For cutting purposes the Roman Hyacinth is the finest bulb grown. (See cut.)

HENDERSON'S SUPERIOR	Prices.		
	Doz.	100	1000
"White Romans," First Size, 12 to 15 centimeters.....	\$.45	\$2.75	26.00
" " Extra Size, 13 to 15 centimeters.....	.50	3.50	30.00
" " Selected Special, 14 cent. and over..	.55	3.75	35.00
Blush Pink Romans, Extra Size, 12 to 15 centimeters..	.40	2.50	20.00
Dark Pink Romans, " " " " ..	.40	2.50	20.00
Light Blue Romans, " " " " ..	.35	2.00	19.00
White Italian or "Red Skinned" Roman, flowers later but good to succeed the White Roman. Extra Size Bulbs, 12 to 15 centimeters.....	.40	2.50	20.00



What Florists Think of Henderson's Superior Bulbs

"I ordered Roman Hyacinths of you in the fall and must say I never saw finer bulbs. Some of them had as many as fifteen, and a few had seventeen spikes of flowers."
J. O. GRABB, Cedartown, Ga.

"Will say that your Bulbs were the best I ever handled. The results were splendid."
E. C. STAMMERJOHN,
Vine Clad Greenhouses, Boonville, Mo.



NARCISSUS, PAPER WHITE

"Grandiflora," or Large Flowering.

This large flowering type is such an improvement over the ordinary "Paper White" that we have discontinued offering the latter. The "Large Flowering" is more vigorous and earlier, producing purest snow white flowers of large size and good substance in large trusses. The Paper White Narcissus is becoming very popular for growing in bowls of water like the Chinese Narcissus. In fact the Paper White gives so much better satisfaction than the Chinese Lily that it is supplanting the latter for water culture.

Price of extra sized bulbs, 25c. per doz.; \$1.00 per 100; \$8.50 per 1000.

White Callas.—Dry Bulbs.

(Expected for shipment in September.)

The dry bulbs are superior for forcing purposes, as they come into bloom quickly and require less room—making less foliage. Dry bulbs will flower nearly twice as abundantly as plants that have been kept growing or only semi-dormant.

Price, Extra Size Bulbs, (4½ in. circumference) \$1.00 per doz.; \$6.50 per 100; \$60.00 per 1000. Mammoth Bulbs, (5½ inches in circumference) \$1.25 per doz.; \$8.00 per 100; \$70.00 per 1000.

HENDERSON'S SUPERIOR NAMED DUTCH HYACINTHS.

Strictly "Top Roots". The highest grade of Bulbs produced in Holland—
not Second size so often sent out as Firsts.

In this grade we offer the largest and best bulbs that the varieties produce. Some kinds, of course, make larger bulbs than others, but purchasers may rely on getting the pick of the crop. These selected "top roots" as the Hollanders call them, naturally cost a little more than the run of crop, but are worth the difference where largest spikes furnished with the greatest number of bells are desired for pots, glasses and exhibition, for the flowers of Hyacinths in an incipient form are stored in the hearts of the bulbs before maturity, exactly as they afterwards develop, so that if you purchase younger, cheaper bulbs, containing in embryo fewer bells on a spike, no system of culture can make them produce more that season. Therefore, for the finest results the best, oldest and largest bulbs (within certain limits) should be chosen for these usually contain the most perfect and greatest number of flowers.

The figures 1, 2, 3 and 4 after the name of the Hyacinth indicates the relative time of flowering—the 1's flower together and are the earliest, No. 4 the latest.



Henderson's Superior
Named Dutch
Hyacinths.

SINGLE.

SINGLE NAMED HYACINTHS.

Strictly "Top Roots." The Largest Produced in Holland.

SINGLE DARK ROSE AND RED.

	PRICE.		
	Each.	Doz.	100
Distinction (3), <i>new, garnet red</i>	\$.15	\$1.50	\$10.50
Garibaldi (1), <i>dark glossy red, grand spike</i>12	1.25	8.50
General Pelissier (1), <i>crimson scarlet, splendid spike, early</i>10	1.00	7.50
Gertrude (3), <i>rosy pink, large spike, splendid forcer</i>08	.85	5.75
King of the Reds, <i>glowing blood scarlet</i>25	2.50	20.00
Lord Macaulay (3), <i>rosy carmine, large bells and spike</i>12	1.25	9.00
Prince Albert Victor, <i>bright rose-red</i>15	1.50	12.00
Robert Steiger (3), <i>deep crimson, large truss</i>08	.85	6.50
King of the Belgians (<i>Roi des Belges</i>) (4), <i>brilliant crimson scarlet, fine spike</i>10	1.00	7.50

SINGLE PINK AND BLUSH.

Cavaignac (4), <i>salmon pink, large full spike</i>12	1.25	9.50
General de Wet (2), <i>charming rose-pink, a sport of Grand Maitre</i>15	1.50	11.00
Gigantea (2), <i>rose and blush, large bells, extra large truss</i>08	.85	6.00
Jacques, <i>new, "the big pink," bright rosy pink</i>15	1.50	9.00
Lady Derby (2), <i>new, large belled, rose pink, big spike</i>15	1.50	11.00
L'Ornement (3), <i>new, soft flesh shaded pink, big bells and spikes</i>10	1.00	7.50
Moreno (2), <i>bright pink, large bells and truss, early</i>10	1.00	7.50
Pink Charles Dickens (2), <i>blush, suffused pink, tall spike</i>12	1.25	10.00

SINGLE PURE WHITE.

Baroness von Thuyll (1), <i>snow white, large compact truss</i>08	.85	7.00
British Queen (2), <i>purest white, grand spike</i>12	1.25	9.50
La Grandesse (3), <i>pure white, grand spike, large bells</i>12	1.25	10.00
L'Innocence (3), <i>snow white, large bells, splendid spike</i>12	1.25	9.00
Mad. Vander Hoop (3), <i>pure white, large bells, erect spike</i>10	1.00	7.50
Monsieur Vander Hoop (2), <i>new, great spike of big white bells</i>15	1.50	11.00

SINGLE TINTED WHITE.

General Vetter, <i>blush white, large pyramidal spike</i>18	1.75	14.00
Grand Blanche (2), <i>white suffused blush, large spikes and bells</i>08	.85	6.00
Grandeur a Merveille (2), <i>blush white, fine large truss</i>08	.85	6.00
Lord Shaftsbury (2), <i>new, rosy white, big bells, grand spike</i>20	2.00	15.00
Mr. Plimsoll (3), <i>ivory white tinted rosy blush, large spike</i>10	1.00	7.00
Voltaire (3), <i>pale blush white, fine spike</i>08	.85	6.50

SINGLE LAVENDER AND LIGHT BLUE.

Count Andrassy (2), <i>new, light blue and lavender, grand</i>12	1.25	9.00
Czar Peter (3), <i>light porcelain shaded lavender, grand spike</i>15	1.50	11.00
Electra, <i>silvery lavender tinted blue</i>20	2.00	15.00
Enchantress (2), <i>new, pure "baby blue," lovely spike</i>15	1.50	11.00
General Vander Hayden (1), <i>large sky blue, early</i>18	1.75	14.00
Grand Lilas (2), <i>porcelain and lavender, fine spike</i>12	1.25	9.00
Grand Maitre (2), <i>large spike, blue shaded porcelain</i>08	.85	6.00
Johan (2), <i>new, silvery lavender, grand spike</i>10	1.00	7.50
Perle Brilliance <i>lavender blue</i>15	1.50	11.00
Queen of the Blues (4), <i>finest light blue, large bells, fine spike</i>15	1.50	10.00
Schotel (2), <i>light lavender blue, extra fine truss and bells</i>12	1.25	8.00

SINGLE INDIGO AND PURPLE.

Baron von Thuyll (1), <i>deep violet blue, large spike, early</i>08	.85	6.50
Charles Dickens (2), <i>bright blue shading porcelain, large spike</i>12	1.25	9.00
King of the Blues (4), <i>dark blue, large spike, and bells</i>08	.85	6.50
Lord Balfour (2), <i>enormous spike claret purple</i>12	1.25	8.00
Prince of Wales (4) <i>dark blue with large white eye</i>12	1.25	9.00
Masterpiece (2), <i>black</i>15	1.50	11.00
Menelik, <i>brilliant black</i>18	1.75	14.00

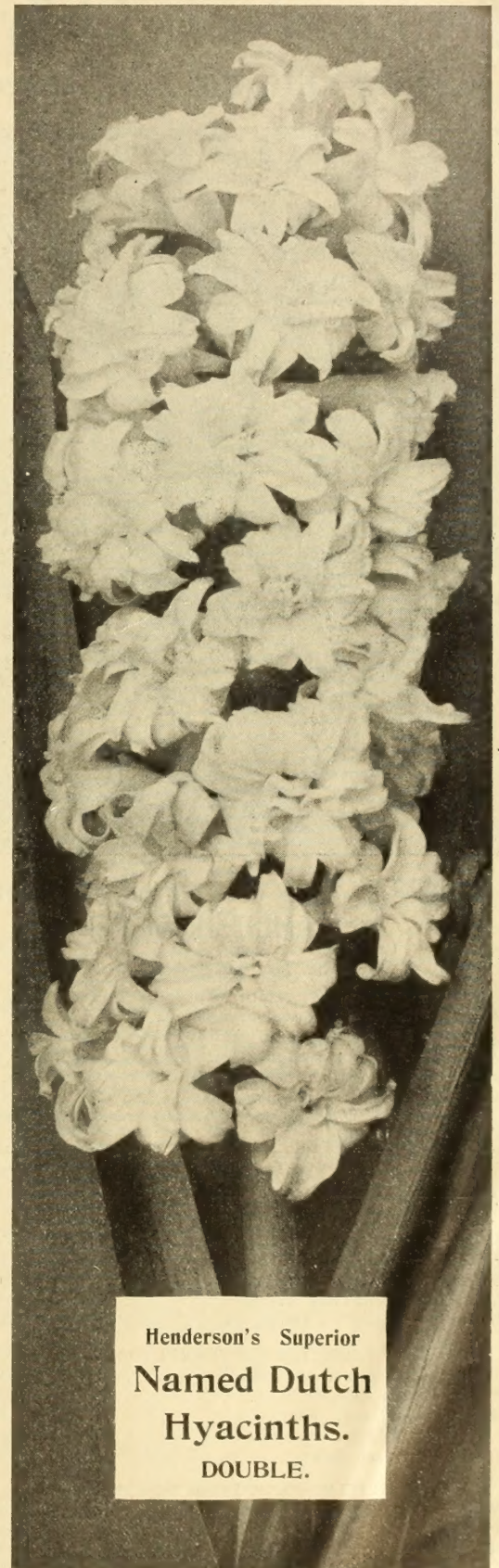
Six bulbs of one variety sold at dozen rates; 25 at 100 rates; 250 at 1,000 rates. Postage will be extra on bulbs desired by mail.

HENDERSON'S SUPERIOR NAMED DUTCH HYACINTHS.

INCLUDING BEAUTIFUL NOVELTIES.

Strictly "Top Roots". The highest grade of Bulbs produced in Holland—
not Second Size so often sent out as First.

PRICES.	Each.	Doz.	100
SINGLE YELLOW AND ORANGE.			
Ida (3), pure bright yellow, large spike, early.....	\$.10	\$1.00	\$8.00
King of Yellows (4), deep pure yellow, grand truss.....	.12	1.25	8.50
MacMahon (4), rich yellow, large spike, and bells.....	.12	1.25	9.00
Marchioness of Lorne (4), new, rosy salmon.....	.12	1.25	9.00
Sonora (4), orange tinted salmon, fine spike.....	.12	1.25	9.00
Yellow Hammer (3), new, golden yellow, broad spike.....	.12	1.25	9.00
DOUBLE RED, ROSE AND PINK.			
Chestnut Blossom (2), new, blush with rose center.....	.12	1.25	8.00
Groot Voorst (3), rosy blush, large bells, fine truss.....	.10	1.00	7.50
Lord Wellington (2), blush pink, large spike and bells.....	.12	1.25	10.00
Noble par Merite, deep rose pink, large bells, extra spike.....	.10	1.00	7.50
Princess Louise, deep crimson rose, large bells and truss.....	.15	1.50	12.00
Edison, rosy flesh tinged pink.....	.12	1.25	9.00
DOUBLE WHITE AND TINTED.			
Bouquet Royal (2), pure white double bells with yellow center, fine spike.....	.12	1.25	8.00
Florence Nightingale (2), glistening white, large truss.....	.15	1.50	10.00
Grandee (3), new, extra fine double white.....	.15	1.50	11.00
Isabella (2), blush white, grand spike.....	.10	1.00	7.50
La Tour d'Auvergne (1), pure white, fine bells and spike.....	.10	1.00	7.50
DOUBLE DARK AND LIGHT BLUE.			
Blocksburg (4), light blue, marbled, large magnificent spike.....	.10	1.00	7.50
Delicate, new, exquisite porcelain blue.....	.15	1.50	9.50
Double Charles Dickens (2), dark blue shaded lilac, large.....	.10	1.00	8.00
Lord Raglan (2), azure with deep blue center.....	.10	1.00	7.50
Von Speyk, lavender tinted azure, compact fine spike.....	.15	1.50	11.00
DOUBLE YELLOW AND ORANGE.			
Goethe (2), rosy salmon with pinkish feather, early.....	.12	1.25	8.50
Jaune Supreme, dark yellow.....	.12	1.25	9.00
Sir Rowland Hill (2), new, bright golden yellow.....	.15	1.50	10.00



Henderson's Superior
Named Dutch
Hyacinths.
DOUBLE.



Six bulbs of one variety sold at dozen rates; 25 at 100 rates; 250 at 1,000 rates. Postage will be extra on bulbs desired by mail.

Henderson's Special Hyacinths

FOR BEDDING AND FORCING.



"We are much pleased with the Henderson Special Hyacinths you sent us last fall; they are very beautiful and we have had them in bloom now over two months."

JOHN ELLIS,
Chatham, N. B., Canada.

HENDERSON'S SPECIAL SECOND SIZE NAMED HYACINTHS.

For Bedding and Forcing.

Henderson's Special Hyacinths (equally useful for bedding or forcing) are larger sized bulbs than those put in ordinary mixtures. They are of the same age as the first size Named Hyacinths offered by us on pages 2 and 3, from which these are the second selection. They will produce fine spikes of bloom, and the different sorts as offered, being of one shade of color, render them of value for bedding in designs, enabling one to obtain the exact color effect desired, which is a great advantage over mixed reds, mixed blues, etc., at but a slight advance in price.

PRICES.

Doz. 100 1000

EARLY VARIETIES FLOWERING TOGETHER.

White—Baroness Von Thuyll, pure white.....	\$.55	\$3.50	\$33.00
Pink—Gigantea, blush pink shaded rosy pink.....	.55	3.50	33.00
Red—Garibaldi, rich crimson.....	.60	4.50	40.00
Light Blue—Grand Lilas, lavender blue.....	.60	4.50	42.00
Dark Blue—Baron Von Thuyll, deep purplish blue.....	.55	3.50	33.00

MID SEASON VARIETIES FLOWERING TOGETHER.

White—La Innocence, pure white.....	.60	4.25	40.00
Pink—Gertrude, deep rose pink.....	.55	3.50	33.00
Red—Robert Steiger, dark rose red.....	.55	3.75	36.00
Light Blue—Regulus, clear light blue.....	.55	3.75	35.00
Deep Blue—Grand Maitre, blue shaded dark blue.....	.55	3.60	34.00

LATE VARIETIES FLOWERING TOGETHER.

White—Madam Vander Hoop, pure white.....	.60	4.25	39.00
Pink—Cardinal Wiseman, rose pink.....	.55	3.75	36.00
Red—King of the Belgians, blood red.....	.60	4.25	40.00
Light Blue—Queen of the Blues, sky blue.....	.60	4.75	45.00
Dark Blue—King of the Blues, indigo blue.....	.55	3.75	35.00

HENDERSON'S SPECIAL SECOND SIZE HYACINTHS.

For Bedding and Forcing.
To Color Without Names.

Much larger bulbs than those comprising mixtures, and each color being of one variety only, render them more useful for bedding, etc.

PRICES.

Doz. 100 1000

Henderson's Single Bedding	Crimson Hyacinths	\$.50	\$3.50	\$32.00
"	Bright Rose ".....	.50	3.50	32.00
"	Light Pink ".....	.50	3.50	32.00
"	Snow White ".....	.50	3.75	35.00
"	Lavender Blue ".....	.50	3.50	30.00
"	Dark Blue ".....	.50	3.50	32.00
"	Yellow ".....	.50	3.75	35.00
"	Special Mixed ".....	.50	3.25	30.00
Henderson's Double Bedding	Crimson Hyacinths55	3.75	34.00
"	Rose Pink ".....	.55	3.75	34.00
"	Snow White ".....	.55	3.75	36.00
"	Lavender Blue ".....	.55	3.75	34.00
"	Dark Blue ".....	.55	3.75	34.00
"	Special Mixed ".....	.55	3.50	32.00

SUPERIOR MIXED HYACINTHS.

Good sized flowering bulbs 15 centimeters (5 1/2 in. and upwards in circumference) well adapted for planting in mixed borders and informal beds, and forced for winter cutting.

PRICES.

Doz. 100 1000

Single mixed	Red, Rose and Pink	\$.35	\$2.75	\$25.00
"	Whites.....	.35	2.75	25.00
"	Light and dark Blues.....	.35	2.75	25.00
"	Yellow, all shades.....	.35	2.75	25.00
"	All colors and shades.....	.35	2.75	25.00
Double Mixed	Red, Rose and Pink40	3.00	27.00
"	Whites.....	.40	3.00	27.00
"	Light and Dark Blues.....	.40	3.00	27.00
"	Yellow, all shades.....	.40	3.00	27.00
"	All colors and shades.....	.40	3.00	27.00

Six bulbs of one variety sold at dozen rates; 25 at 100 rates; 250 at 1,000 rates. Postage will be extra on bulbs wanted by mail.



HENDERSON'S SUPERIOR SINGLE EARLY-FLOWERING TULIPS.

For Forcing and Bedding.

Our bulbs of Tulips are the very best flowering bulbs procurable; we handle largest "First Size" exclusively. No "seconds" at a cheaper price ever enter our house.

To aid in arranging beds.—The figures 1, 2, 3, etc., following varieties, indicate their earliness of bloom; the 1's flower together and are the earliest; 2's follow before the 1's are out of bloom, etc. The height is indicated by "D" for dwarf; "M" for medium; and "T" for tall.

MIXED SINGLE EARLY TULIPS.

Standard Quality Mixed, 12c. per doz., 75c. per 100, \$6.50 per 1000.

HENDERSON'S SUPERFINE RAINBOW MIXTURE OF SINGLE EARLY TULIPS mixed by ourselves from named varieties, including the right proportions of bright colors, all blooming together and of uniform height; the bulbs are all first size.

Price, 15c. per doz., \$1.00 per 100, \$8.00 per 1000.

NAMED SINGLE EARLY TULIPS.	Prices:	Doz.	100	1000
All First Size Bulbs—No Seconds.				
Admiral Reynierse. 2M. New, scarlet, striped white...	\$.30	\$2.00	\$18.00	
Albion (White Hawk). 3M. Large white, grand bedder...	.25	1.75	15.00	
Artus. 3D. Bright red.....	.20	1.00	8.00	
Belle Alliance (Waterloo). 3M. Scarlet.....	.30	2.00	18.00	
Bride of Haarlem. Golden. 3M. Yellow, feathered red...	.50	3.75	36.00	
Cardinal Rampollo. 3M. New, yellow-bordered orange...	.40	2.75	25.00	
Cerise Grisdelin. 3M. Mauve, edged white.....	.35	2.50	23.00	
Claremont Gold. 1T. Big flower, orange scarlet striped yellow	.30	2.00	18.00	
Claremont Silver. 1T. Rose pink, feathered, silvery white.	.30	2.00	18.00	
Cottage Maid. (La Precieuse.) 3M. Rose and white.....	.15	1.00	8.00	
Couleur Cardinal. 3T. Crimson.....	.25	1.75	15.00	
Chrysolora. 3M. Pure golden yellow.....	.15	.85	6.50	
Cramoise Brilliant. 3M. Vermillion scarlet.....	.20	1.25	10.00	
Crimson King. 3M. Crimson scarlet.....	.20	1.00	8.00	
De Vlieger. 3M. Deep carmine pink.....	.25	1.75	16.00	
Duchesse de Parma. 3T. Orange-red, yellow edge.....	.20	1.00	9.00	
Duc Cochineal. 1D. New, rich vermilion.....	.35	2.50	22.00	
Duc van Thol, Red and Yellow. 1D. Red and yellow.....	.20	1.25	9.50	
Scarlet. 1D. Deep scarlet.....	.25	1.50	14.00	
White Maximus. 1D. Large white.....	.20	1.00	8.00	
Flamingo (Rose Hawk). 3M. Large flower of bright pink				
shaded deeper pink.....	.50	3.50	33.00	
Golden Lion. 3M. Red-orange and yellow.....	.75	5.50	52.00	
Golden Queen. 4T. Deep golden yellow, extra large.....	.30	2.00	18.00	
Grace Darling. 1M. Brilliant scarlet, immense.....	.40	2.75	26.00	
Grand Duc de Russia. 3M. White, striped violet.....	.30	2.00	18.00	
Grand Master of Malta. 3M. White and red.....	.30	2.00	18.00	
John Bright (Von Berchem). 2M. Large deep glowing rose	.30	2.00	18.00	
Joost von Vondel. 3M. Cherry red, feathered white.....	.25	1.75	15.00	
White. 3M. Pure white.....	.35	2.50	23.00	
Kaiser Kroon. 3T. Crimson scarlet, edged yellow.....	.20	1.25	10.00	
La Reine. Queen Victoria. 3M. White, flushed.....	.20	1.00	7.50	
Le Matelas. 3M. Rose, edged white.....	.35	2.50	23.00	
L'Immaculee. 3M. Pure white; poor substance.....	.15	.85	6.50	
La Remarquable. 3M. New, big flower of plum purple...	.40	3.00	28.00	
La Riante. 1M. Rich pink shaded carmine.....	.30	2.25	20.00	

NAMED SINGLE TULIPS.	Prices:	Doz.	100	1000
All First Size Bulbs—No Seconds.				
La Unique. 2T. New, immense flower, yellow and white...	\$.90	\$7.00	\$	
Mon Tresor. 2M. Large yellow.....	.20	1.25	11.00	
Pink Beauty. 2M. Brilliant orange-pink.....	.50	3.50	32.00	
Pottebakker. Yellow. 2M.....	.20	1.25	10.00	
White. 2M.....	.20	1.25	11.00	
Scarlet. 2M.....	.25	1.50	14.00	
Primrose Dame. 1M. Primrose yellow.....	.30	2.00	18.00	
Prince of Austria. 3T. Orange red.....	.25	1.50	14.00	
Proserpine. 2M. Carmine rose.....	.30	2.25	21.00	
Queen of the Netherlands. 2M. Blush pink.....	.30	2.25	20.00	
Rosa Mundi Huyekman. 3M. Rose and white.....	.20	1.00	8.00	
Rose de Holland. 3M. Blush white flamed pink and				
carmine, large flower.....	.35	2.50	23.00	
Rose Gris de Lin. 3D. White, edged rose.....	.20	1.00	8.00	
Rose Luisante. 3M. Deep rose.....	.30	2.00	17.50	
Sir Thomas Lipton. 3T. Rich purplish red, toning off to				
blood crimson at edges.....	.40	2.75	25.00	
Standard Silver. 3M. White, striped crimson.....	.25	1.75	16.00	
Standard Golden. 3M. Crimson, striped yellow.....	.35	2.50	23.00	
Stanley. 3M. Rosy carmine.....	.30	2.25	21.00	
Thomas Moore. 3T. Orange.....	.20	1.00	8.50	
Van der Neer. 3M. Violet purple.....	.50	3.50	33.00	
Van Spandonk. 2M. Striped crimson and white.....	.50	3.50	33.00	
Van Gooyen. 3M. Pink and blush, fine bedder.....	.20	1.00	8.50	
Vermilion Brillante. 3M. Dazzling vermilion scarlet...	.30	2.00	18.00	
White Swan. 4T. Large, pure white, egg shaped.....	.20	1.00	8.00	
Wouwerman. 3M. Purple.....	.40	3.25	30.00	
Yellow Prince. 3M. Pure yellow.....	.20	1.00	7.50	
ODD AND RARE EARLY TULIPS.				
Clusiana. The "Little Lady Tulip".....	.25	1.75	16.00	
Greigii. Orange scarlet, with yellow and black center...	.75	6.00		
Oculus Solis. Fiery red with black eye.....	.30	2.00	18.00	
Florentine, Large Flowering. Yellow, scented.....	.20	1.25	10.00	
Kaufmanii. White and blush, extra early.....	1.50	10.00		
Tubergiana. The largest flowering tulip, flame scarlet.....	2.50	20.00		

We supply 6 Bulbs of one variety at the dozen rate, 25 at the 100 rate, 250 at the 1,000 rate.



A "FLAT" OF FORCED DOUBLE TULIPS.

DOUBLE Early Flowering TULIPS.

STRICTLY FIRST QUALITY BEST FLOWERING BULBS. NO "SECONDS" NOR SUBSTITUTES.

ALL FIRST SIZE BULBS, NO "SECONDS."

NAMED VARIETIES.	Prices.		
	Doz.	100	1000
Alba Maxima. 2D. <i>A fine double, white.</i>	\$.20	\$1.25	\$10.00
Boule de Neige. <i>Large double white, good forcer.</i>50	3.50	30.00
Cherry Ripe. 2M. <i>Cherry red and carmine rose.</i>40	2.75	26.00
Cochineal. <i>Large brilliant scarlet.</i>40	2.50	24.00
Coronation. 3M. <i>Crimson, white at base.</i>60	4.00	36.00
Crown of Gold. (<i>Couronne d'Or</i>). 2M. <i>Large yellow, shaded orange.</i>25	1.75	15.00
Crown of Roses. (<i>Couronne des Roses</i>). 2M. <i>Dark rose carmine.</i>35	2.75	25.00
Duke of York. 3M. <i>Carmine rose, edged white.</i>20	1.00	8.50
Gloria Solis. 2M. <i>Deep crimson, broad golden margin.</i>20	1.25	11.00
Henry Witte. 3M. <i>Crimson with yellow edge.</i>35	2.25	20.00
Imperator Rubrorum. 2M. <i>Bright scarlet, yellow base.</i>25	1.75	16.00
La Candeur. 3M. <i>Pure white, full and large.</i>20	1.25	11.00
La Grandesse. 2T. <i>Carmine-rose and blush.</i>35	2.50	23.00
Lac Von Haarlem. <i>Brilliant rosy-violet.</i>50	3.50	33.00
Le Blason. 3M. <i>Delicate rose, shaded white.</i>20	1.25	10.00
Leonardo da Vinci. 2M. <i>Orange scarlet, edged yellow.</i>30	2.25	20.00
Lord Beaconsfield. 3M. <i>Deep cherry rose.</i>35	2.50	23.00
Murillo. (<i>Albino</i>). 2M. <i>Blush white, shaded rose.</i>20	1.25	10.00
Raphael. 2M. <i>Large, blush white shaded rose.</i>35	2.75	26.00
Rex Rubrorum. 3M. <i>Bright crimson scarlet.</i>25	1.75	15.00
Rose d'Amour. 2M. <i>Blush pink changing to rose.</i>35	2.75	26.00
Rubra Maxima. 2M. <i>Dark, carmine scarlet.</i>20	1.25	10.50
Safrano. 2M. <i>New, yellow flushed salmon and apricot.</i>50	3.50	33.00
Salvator Rosa. 2M. <i>Deep rose, flamed white.</i>25	1.50	14.00
Toreador. 2D. <i>Orange red with yellow border.</i>40	3.00	28.00
Tournesol. 2D. <i>Bright scarlet with yellow tips.</i>30	2.25	20.00
Tournesol Yellow. 2D. <i>Golden yellow, shaded orange.</i>25	1.75	16.00
Virgilius. 3M. <i>Deep carmine, blush at edges.</i>25	1.50	12.00
Violet Fonce. <i>Deep rose mauve.</i>30	2.00	18.00
Vuurbaak. 2M. <i>Fiery orange scarlet.</i>30	2.25	20.00

MIXED Double Early Flowering TULIPS.

(Strictly first size bulbs, no seconds.)

First Quality Mixed. 12c. doz., 85c. per 100, \$7.00 per 1000.

HENDERSON'S SUPERFINE RAINBOW MIXTURE OF DOUBLE EARLY TULIPS.

A very superior mixture made up from named varieties by ourselves. It contains proper proportions of bright flowering sorts, of uniform heights and all blooming together. 15c. per doz., \$1.00 per 100, \$8.50 per 1000.

Six bulbs of any one variety sold at dozen rates; 25 at 100 rates; 250 at 1,000 rates. Postage will be extra on bulbs wanted by mail.

DOUBLE Late Flowering TULIPS.

	Doz.	100	1000
Blanche borde poupre, <i>wine red, bordered white.</i>	\$.20	\$1.00	\$9.00
Bleu Celeste (<i>Blue Flag</i>) <i>violet blue, very distinct.</i>30	2.25	20.00
La Belle Alliance, <i>violet red, striped white.</i>25	1.75	16.00
Marriage de ma Fille, <i>white, feathered with crimson.</i>35	2.50	24.00
Paeony Gold, <i>golden withered featherings.</i>20	1.25	11.00
Paeony Red, <i>deep crimson red.</i>20	1.25	10.00
Yellow Rose, <i>large, golden yellow.</i>20	1.00	8.50
Mixed Double Late Flowering.....	.20	1.00	7.50

SINGLE LATE FLOWERING GARDEN TULIPS.

REMBRANDT TULIPS.

A new class of stately beauty—in reality Darwin Tulips have "broken" into permanent variegations—the flowers of various rich colors being striped, blotched and marked with different shades and colors.

	Doz.	100
Apollo. <i>Lilac rose and white striped carmine.</i>	\$.35	\$2.50
Crimson Beauty. <i>Carmine and white flamed dark red.</i>60	4.50
Eros. <i>Lilac and white striped dark.</i>60	4.50
Marco Spado. <i>White flamed scarlet.</i>60	4.50
Purity. <i>White striped pink.</i>60	4.50
Red Prince. <i>Rose flamed fiery red.</i>60	4.50
Sirene. <i>Lilac and maroon flamed white.</i>60	4.50
Semele. <i>Vivid rose-pink striped darker rose.</i>50	3.50
Victor Hugo. <i>Bright carmine flamed white.</i>60	4.50
Zenobia. <i>Amaranth and white marked brown.</i>50	3.50
Rembrandt Tulips Choice Mixed Varieties. \$16.00 per 1000.....	.25	1.75

PARROT OR DRAGON TULIPS.

Immense flowers of brilliant and varied colors. The petals are curiously fringed or cut.

	Doz.	100
Admiral de Constantinople. <i>Red tipped orange.</i>	\$.25	\$1.25
Lutea Major. <i>Bright yellow.</i>25	1.25
Markgraff von Baden. <i>Yellow striped scarlet and green.</i>25	1.25
Monstre Cramoise. <i>Deep crimson with black center.</i>25	1.25
Perfecta. <i>Yellow striped red.</i>25	1.25
Parrot Tulips Choice Mixed Varieties. \$7.50 per 1000.....	.20	1.00

BIZARRE TULIPS.

Large flowers having yellow ground color, feathered or striped with crimson purple or white.

	Doz.	100
Absalom. <i>Orange feathered brown and yellow.</i>65	\$5.00
Black Boy. <i>Dark brown with gold and grey.</i>50	3.50
Electeur de Cologne. <i>Golden-yellow flamed brown and black.</i>50	3.50
Emperor du Maroc. <i>Bright yellow feathered dark red.</i>50	3.50
Prins Mauritz. <i>Yellow marked with brown.</i>50	4.00
Romea (<i>Gloria Mundi</i>). <i>Yellow feathered with orange-red.</i>50	4.00
Bizarre Tulips Choice Mixed Varieties. \$8.00.....	.20	1.00

ROSE BYBLOEMEN TULIPS.

Immense flowers, coloring white ground with beautiful stripes and markings of crimson, pink, scarlet, and rose.

	Doz.	100
Admiral Kingsbergen. <i>White feathered scarlet.</i>	\$.65	\$5.00
Athalia. <i>White bordered and feathered red.</i>65	5.00
Poncean Transparent. <i>Rose striped white.</i>65	5.00
Reine de Holland. <i>White marked with dark red.</i>65	5.00
Roi de Cerises. <i>Feathered wine red on white.</i>65	5.00
Reine Nathalie. <i>White marked with violet-rose.</i>65	5.00
Rose Bybloemen Tulips Choice Mixed Varieties. \$12.00 per 1000.....	.25	1.50

VIOLET BYBLOEMEN TULIPS.

Blotched, striped or feathered with blue, lilac, violet, purple or black on white ground.

	Doz.	100
Glory of Holland. <i>Marked violet and white.</i>65	5.00
Gloriosum Nigrorum. <i>Light yellow feathered violet-brown.</i>	1.25	9.00
Lady Stanley. <i>White bordered and feathered violet.</i>50	4.00
La Guirlande. <i>Rose-violet feathered white.</i>65	5.00
Tableau de Rubens. <i>Violet bordered brown.</i>65	5.00
Vondel. <i>Blush-violet and white.</i>	1.25	9.00
Violet Bybloemen Tulips Choice Mixed Varieties, \$10.00 per 1000.....	.20	1.25

LATE OR MAY-FLOWERING "COTTAGE" TULIPS.

THESE grand late flowering garden Tulips are on the rising tide of popularity. They do not supplant early Tulips for forcing, nor bedding, but for mixed gardens, herbaceous borders—where these late Tulips need not be disturbed, they will prove a source of great satisfaction, being very hardy, and continue to grow, increase and flower for many years. Of exceptional value when cut for vases.

	Doz.	100
Bridesmaid. Cherry rose striped scarlet violet and white.....	\$.25	\$1.25
Bouton d'Or. (<i>Ida, Golden Beauty.</i>) Golden yellow. \$10 per 1000	.20	1.25
Doris. Blush shading to orange-rose, then purplish rose.....	.50	3.50
Fairy Queen. Rosy heliotrope, margined yellow.....	.35	2.50
Fawn. Fawn tinged yellow and dove gray.....	.75	6.00
Firefly. Glowing orange-rose.....	.40	2.75
Fulgens Red. Reflexing petals of glowing vermilion.....	.30	2.00
Gala Beauty (<i>Columbus</i>). Vermillion striped golden-yellow.....	.75	6.00
Gesneriana Major. Crimson scarlet with black center. \$10.00 per 1000.....	.20	1.25
Gesneriana Lutea. Full rich yellow.....	.30	2.00
Golden Crown. Golden-yellow edged orange red. \$10.00 per 1000	.20	1.25
Inglescomb Scarlet. Brilliant vermilion with black base.....	.35	2.50
Inglescomb Pink. Large flowers of bright rose-pink.....	.35	2.50
Innocence. Large pure white flowers of elegant form.....	1.50	12.00
Isabella (<i>Shandon Bells; Blushing Bride.</i>) Creamy white shaded pink which changes to carmine rose..... \$12.00 per 1000	.25	1.50
John Ruskin. Apricot pink bordered canary yellow.....	2.00	16.00
La Merveille. Salmon rose shot orange-red, yellow center.....	.25	1.25
La Panachee. (<i>Maria de Medecis.</i>) White flaked cherry-red.....	.40	3.00
La Reve. (<i>Hobbema.</i>) Soft rose with apricot glow.....	.65	5.00
Leghorn Bonnet. Primrose yellow of satiny texture.....	.35	2.50
Miss Wilmott. Opens primrose, but soon assumes bright yellow..	.75	6.00
Mrs. Moon. Rich orange yellow.....	.50	3.50
Orange Beauty. (<i>Gesneriana Aurantiaca Major.</i>) Fiery orange-red shaded with gold.....	.30	2.00
Parisian White. (<i>La Candeur.</i>) White changing to pink.....	.30	1.75
Parisian Yellow. Clear yellow flowers with pointed petals.....	.30	1.75
Picotee. White with a picotee margin of rose-pink. \$12 per 1000	.20	1.50
Retroflexa Yellow. Rich yellow.....	.25	1.50
Rosalind. Cherry-rose with white base.....	.20	1.25
Rose Mignonne. Creamy white striped pink.....	.35	2.50
Royal White. White touched with primrose.....	.50	3.50
Silver Queen. Rosy white deepening to a carmine edge.....	.50	3.50
Striped Beauty. (<i>Summer Beauty.</i>) Rose flaked crimson and white.....	.35	2.75
Sunset. (<i>Javne d'Oeuf.</i>) Yellow with orange-red edges.....	.35	2.75
The Lizard. Queerly feathered with purple and yellow.....	.75	6.00
Vitellina. Large pale canary yellow flowers.....	.35	2.75
York and Lancaster. White suffused rose towards edge.....	.35	2.50
Grand Mixture of Old English Cottage Tulips. Many varieties. \$3.00 per 1000.....	.20	1.00

GIANT DARWIN TULIPS.

THESE gorgeous new late or May-flowering tulips are very stately and beautiful—producing immense flowers on tall sturdy stems attaining a height of from two to three feet. The flowers are models of perfection in form, lasting wax like substance—and in a great variety of both dainty and richly brilliant colorings. The Darwin Tulips are exceedingly effective when grown in groups of one variety in the garden or herbaceous border. As cut flowers they are unsurpassable. Darwin Tulips may be successfully flowered in pots or pans in the house in winter if grown cool and not forced into bloom before March.

	Doz.	100
Ariadne. Glossy vermilion; interior scarlet-rose.....	.75	6.00
Apricot. Reddish apricot with a coppery sheen.....	.65	4.50
Baronne de la Tonnyaye. Carmine rose toning off to pink at edges..	.35	2.50
Clara Butt. Soft salmon pink shaded rose.....	.55	4.00
Dream. Rosy lilac and mauve with purple interior.....	.35	2.75



GIANT DARWIN TULIPS.—Continued.

	Doz.	100
Edmee. Cherry-red flushed blush at margin.....	.75	6.00
Fanny. Delicate rose shaded blush.....	.60	4.25
Faust. Glossy maroon-purple.....	1.00	7.50
Glory. Glowing cherry-red, very fine.....	.55	4.00
Glow. Crimson-scarlet; blue-black base zoned white.....	.40	2.75
Goliath (<i>Breeder.</i>) Salmon with a violet shade.....	.55	4.00
Gretchen. (<i>Margaret, Marguerite.</i>) Outside blush; inside blush rose.....	.30	2.00
Jules Vernot. Delicate purplish rose.....	.55	4.00
Kate Greenaway. White suffused with lilac.....	.35	2.50
King Harold. Glossy blood-red shaded maroon.....	.40	2.75
La Tulipe Noire. (<i>The Black Tulip.</i>) The blackest of all.....	2.75	20.00
Loveliness. Satiny rose-pink.....	.35	2.50
Madam Krelage. Purplish-rose, margined with blush-pink.....	.40	3.00
Maiden's Blush. Carmine-rose, blush white edge.....	.50	3.25
Mr. Farnscomb Sanders. Brilliant orange-scarlet.....	.75	5.00
Massachusetts. Vivid pink.....	.60	4.50
May Queen. Bright soft rose.....	.40	2.50
Medusa. Orange-scarlet interior salmon.....	.85	6.50
Psyche. Rich rose color; inside silvery rose.....	.75	6.00
Painted Lady. One of the best of the white Darwins.....	.40	3.00
Ph. de Comminet. Dark mahogany with purple base.....	.40	3.00
Pride of Harlem. Brilliant salmon-rose shaded scarlet.....	.50	3.50
Pygmalion. Rich lake-rose with white base.....	.40	2.50
Queen of Roses. Carmine rose-blending into pink; interior scarlet..	.40	2.50
Ronald Gun. Deep indigo toning off light blue and lavender....	.55	4.00
Rev. H. Ewbank. Silvery lavender shading heliotrope.....	.55	4.00
Sieraad van Flora. Vivid rose-red.....	.55	4.00
Suzon. Soft pink, with blush margin.....	1.00	7.50
Tak Van Poortvliet. Deep salmon-rose with blue center.....	.55	4.00
Turenne. Bronzy gold overlaid with purplish brown.....	1.00	8.00
Violet Queen. Rich ruby-violet.....	.75	5.00
White Queen. White, flushed with blush.....	.50	3.50
William Pitt. Brilliant scarlet-red.....	.60	4.50
Yellow Perfection. Golden yellow overlaid with purplish bronze..	.75	5.00
Zephyr. Soft violet-rose with a white center.....	.55	4.00
Grand Mixture of Darwin Tulips. Great variety of all colors \$10.00 per 1000.....	.25	1.35

Six bulbs of one variety sold at dozen rates; 25 at 100 rates; 250 at 1,000 rates. Postage will be extra on bulbs desired by mail.

HENDERSON'S SUPERIOR Narcissus Bulbs.

All first size, strong flowering bulbs—we do not handle the cheaper "seconds."

Narcissus—Large Trumpet.

	Prices.		
	Doz.	100	1000
ALL YELLOW.			
Emperor (3), rich yellow flowers, trumpet immense.....	\$.25	\$1.60	\$14.00
" Mammoth "Double Nose" Bulbs.....	.30	1.75	16.00
Golden Spur (1), large, rich yellow flowers, robust habit, unsurpassed for forcing and gardens; very free.....	.25	1.50	14.00
Golden Spur, Mammoth Double Nosed Bulbs.....	.30	1.75	16.00
Glory of Leiden (4), giant yellow..... 15c. ea.	1.50	12.00	—
Henry Irving (1), bold flower of rich yellow; early.....	.25	1.50	12.00
Trumpet Maximus (2), large, dark golden yellow.....	.25	1.50	12.00
Rugilobus (2), pale yellow, trumpet golden.....	.25	1.50	12.00
Shakespeare (3) large yellow with golden trumpet... 25c. ea.	2.25	18.00	—
Single Von Sion (Spurius Major) (1), large, deep yellow, prized for both forcing and bedding.....	.20	1.50	11.00
Single Von Sion Double Nose Bulbs.....	.25	1.50	13.50
TWO-COLORED (WHITE AND YELLOW).			
Empress (3), perianth white, trumpet rich yellow, large.....	.25	1.50	12.00
" Mammoth Double Nose Bulbs.....	.30	1.75	15.00
Grande (5), white perianth, broad petals, trumpet yellow.....	.20	1.00	9.00
Horsefieldi (2), large pure white flower with yellow trumpet.....	.25	1.25	10.00
" Mammoth "Double Nose" Bulbs.....	.30	1.50	12.50
J. B. M. Camm (3) white with creamy trumpet, large and fine.....	.40	3.00	28.00
Mme Plemp (4), new and fine bicolor.....	.40	2.75	26.00
Mrs. Walter Ware (3), broad white wings, large yellow trumpet.....	.30	1.75	16.00
Princeps Maximus (1), early, perianth sulphur, rich yellow trumpet, popular forcing, though of poor substance.....	.15	1.00	7.50
Princeps Maximus, Mammoth "Double Nose" Bulbs.....	.20	1.25	9.00
Victoria (2), grand bicolor, large and fine.....	.25	1.50	12.00
Victoria, Mammoth "Double Nose" Bulbs.....	.30	1.75	15.00
ALL WHITE.			
Albicans (2), creamy white with silvery trumpet.....	.30	2.00	18.00
La Innocence (2), a new large flowering white..... 20c. ea.	2.00	16.00	—
Mme. de Graaff (4), largest pure white with creamy trumpet.....	1.50	12.00	—
Mrs. Camm (4), A new and beautiful large white variety.....	1.00	7.50	70.00
Mrs. Thompson (2), a very early pure white, large and handsome, free and robust.....	.25	1.75	15.00

Medium Trumpet Narcissus

	Doz.	100	1000
Barii Conspicua (4) yellow, crown edged orange-red.....	\$.15	\$1.00	\$7.50
" Dorothy Wemyss (5) large white with yellow crown.....	1.50	12.00	—
" Flora Wilson (4), white with yellow crown edged orange.....	.50	3.75	35.00
" Sensation (4), yellow with canary crown edged orange.....	1.25	10.00	—
Incomparabilis Autocrat (3), yellow with deeper yellow bowl like crown.....	.25	1.50	12.00
" Beauty (4), rich yellow, crown edged orange-red.....	.35	2.50	24.00
" Sir Watkin (2), yellow with golden yellow crown.....	.25	1.50	13.00
" "Double Nose" Bulbs.....	.30	1.75	16.00
" Stella (3), white with yellow crown.....	.15	1.00	7.50
" Stella Superba (3), white with yellow crown.....	.30	2.00	18.00
" Princess Mary (5), cream with yellow crown suffused orange.....	.35	2.50	24.00
Leedsii Duchess of Westminster (4), white with canary crown.....	1.25	8.50	75.00
" Katherine Spurrel (4), large white with pale yellow crown.....	.10	3.00	28.00
" Mrs. Langtry (4), white with primrose crown, free.....	.15	1.00	7.50
" Mary M. De Graaff (4), large white with primrose crown.....	.25	1.50	13.00
Nelsoni Major (4), snow white with yellow cup suffused orange.....	.25	1.50	14.00

Narcissus Burbidgei and Poeticus.

	Doz.	100	1000
Burbidgei Baroness Heath (3), yellow with orange cup.....	\$.40	\$3.00	\$28.00
" Falstaff (3). Large white flower with yellow cup edged orange.....	.25	1.75	16.00
Poeticus (6). The popular old "Pheasant's Eye." White with orange cup edged red.....	.12	.75	6.00
" Grandiflorus (5). A new large flowering type of above.....	.30	2.25	20.00
" Ornatus (4), the large early flowering Poeticus.....	.15	.75	6.50
" "Mammoth Double Nose" Bulbs.....	.20	1.00	8.00
" King Edward VII (Almira) (5), new, extra fine, large flowers.....	.30	2.00	18.00



Six bulbs of one variety sold at dozen rates; 25 at 100 rates; 250 at 1,000 rates. Postage will be extra on bulbs wanted by mail.

DOUBLE FLOWERING NARCISSUS.

All Strong First Size Flowering Bulbs—we do not deal in the cheaper "Seconds."

	Doz.	100	1000
Alba Plena Odorata, double white, exquisitely scented.....	\$.15	\$1.00	\$7.50
Incomparable, fl. pl., double yellow, with orange nectary.....	.15	1.00	8.50
Orange Phoenix, double white, with orange. Extra large bulbs..	.25	1.25	11.00
Sulphur of Silver Phoenix, cream and sulphur. Extra large bulbs..	.25	1.50	14.00
DOUBLE VON SION, Talemionus Plenus (Double Yellow Daffodil). Finest strain of Holland grown bulbs. Rich golden yellow perianth and trumpet. One of the best forcing sorts. (French grown Von Sions we do not handle—our experience with them is, they are apt to "come green.")			
First Size Bulbs, 11 cm. and over.....	.20	1.25	11.00
Extra Size Bulbs, 13 cm. and over.....	.25	1.50	14.00
Mammoth "Double Nosed or Mother" Bulbs, producing 2 and 3 flowers per bulb.....	.35	2.50	22.00

NEW HARDY CLUSTER-FLOWERED NARCISSUS.

	Doz.	100	1000
Poetaz Alsace (3), white with yellow cup; earliest.....	\$.35	\$2.50	\$24.00
Elvira (4), white with yellow cup, 3 to 4 flowers to a stem..	.25	1.75	16.00
Irene (4), yellow with golden cup, 7 to 8 flowers to a stem..	.35	2.50	24.00
"PETITE DAFFODILS."			
For pot culture, rock work, etc.			
Bulbocodium Conspicua (4), the yellow Hoop Petticoat.....	.35	2.75	25.00
Monophylla (1), the early white Hoop Petticoat.....	.40	3.00	28.00
Johnstoni Queen of Spain (2). Small clear yellow flowers.....	.55	4.00	38.00
Moschatus of Haworth (1). The Spanish white Daffodil.....	.35	2.50	23.00
Triandus Albus (3). "Angel's Tears." Small white cyclamen like flowers.....	.35	2.25	20.00

POLYANTHUS NARCISSUS.

	Doz.	100	1000
PAPER WHITE NARCISSUS. See page 1.			
Bazleman Major, white with dark yellow cup.....	.50	\$3.50	\$32.00
Double Roman, white with double citron colored cups, large quantities of these are forced.....	.25	1.50	10.00
Grand Monarque, large white flowers with yellow cups.....	.25	1.50	12.00
Isaac Newton, yellow with orange cup, free.....	.35	2.50	24.00
Maestro, cream white with orange cup.....	.50	3.50	32.00
Mont Cenis (2), white with yellow cup.....	.30	1.75	16.00
Queen of Yellows, bright yellow with orange cup.....	.35	2.25	20.00
White Pearl (5), large, satiny white flowers.....	.25	1.75	15.00
Chinese Sacred Narcissus. Very popular for growing in bowls of water. Large Chinese grown bulbs (importation expected in September).....	.60	4.50	40.00
Per original basket of 30 bulbs, \$1.35.			
.. .. bundle (4 baskets) 120 bulbs, \$5.00.			

JONQUILS OR NARCISSUS JONQUILLA.

	Doz.	100	1000
Single Jonquil, rich yellow, very fragrant.....	\$.12	\$.65	\$5.00
Double Jonquil, heads of very double golden.....	.30	2.00	18.00
Campernelle. The large Yellow Jonquil—prized for forcing.....	.12	.75	6.00
Rugulosus. (Giant Campernelle Jonquil) Large, six-lobed fragrant yellow flowers.....	.15	.85	7.00
Giant Double Campernelle. 15c. each.....	.75	6.00	55.00

MIXED NARCISSUS OR DAFFODILS.

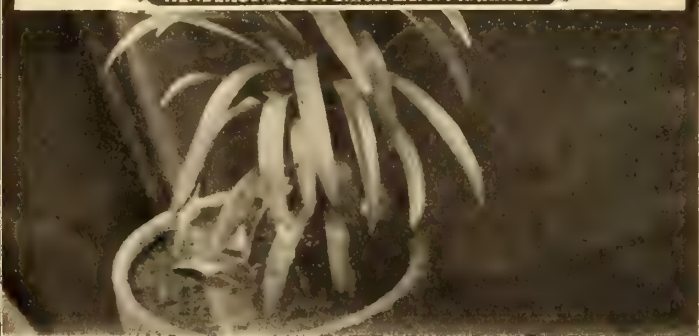
	Doz.	100	1000
Mixed Large Trumpet Narcissus, large bulbs.....	\$.15	\$1.00	\$8.00
" " Hybrid Seedlings ".....	.25	1.50	14.00
" Medium " Narcissus ".....	.15	.85	7.00
" Double Narcissus ".....	.15	1.00	8.00
" Polyanthus.....	.20	1.25	10.00



We furnish 6 bulbs of one variety at dozen rates; 25 at 100 rates; 250 at 1,000 rates. Postage will be extra on bulbs desired by mail.



HENDERSON'S SUPERIOR LILIUM HARRISII



THE TRUE BERMUDA EASTER LILY (LILIUM HARRISII)

Henderson's Superior BERMUDA EASTER LILY

LILIUM HARRISII.

We wish to lay particular stress upon the size and quality of our Bulbs which are larger, healthier and better than those usually sold—for the reason that no expense is spared in manuring and cultivating, spraying etc. Experience having shown us that bulbs so treated are incomparably superior

PRICES OF THE TRUE BERMUDA EASTER LILY BULBS.

Bulbs Ready for Shipment—August to November.	Doz.	100	1000
First Size Bulbs. (5 to 7 inches in circumference.) The best for "Earliest" forcing and particularly for cutting with long stems. Bulbs should produce from 4 to 6 flowers. (400 bulbs in a case).....	\$.60	\$4.50	\$40.00
Intermediate Size. (6 to 7 inches in circumference.) These are good bulbs for either pot culture or for cut flowers. The bulbs should produce from 6 to 8 flowers (350 bulbs in a case.).....	.75	5.00	48.00
Extra Size Bulbs. (7 to 9 inches in circumference.) This is the most popular size to grow as pot plants for decoration and equally as valuable for cutting. Bulbs should produce from 8 to 12 flowers. (200 bulbs in a case).....	1.25	8.50	83.00
Monstrous Size Bulbs. (9 to 11 inches in circumference.) These are usually grown for specimens in pots, for exhibition and decoration. Each bulb should produce from 12 to 18 flowers. (125 bulbs in a case).....	2.50	18.00	175.00

WHAT FLORISTS THINK OF HENDERSON'S EASTER LILY BULBS.

"We have been more successful with your *Harrisii* bulbs than have any of the other florists in the vicinity of Wheeling with bulbs from other sources."
OSCAR WRIGHT, Moundsville, W. Va.

"Please book my order for Bermuda Easter Lilies (*L. Harrisii*.) Those I had from you last Fall were the best I have grown in years. They were certainly fine."
C. BECHSTEDT, Florist,
Oswego, N. Y.

"FORMOSA" LONGIFLORUM LILIES.

FOR EARLY FORCING.

For shipment September to December.

This type of *Lilium longiflorum* from the Island of Formosa has been grown experimentally by a few florists in the U. S. the past two seasons and in most instances has proven the claim that it can safely be forced earlier than any other longiflorum type (excepting *L. Harrisii*.) The plants are of healthy strong growth, producing freely, large pure white flowers of splendid lasting substance.

We understand that some stocks of alleged Formosa "Lilies" put out last season were not quite satisfactory, being mixtures of various longiflorum types, but no word of complaint has been received regarding our strain. In fact we have received several commendatory letters with accompanying orders for "Henderson's Strain of Formosa Longiflorums." Our bulbs are coming from the same grower this season as in the past.

PRICES OF FORMOSA LONGIFLORUM LILY BULBS.

	Doz.	100	1000
First size bulbs 6 to 8 inches in circ. (350 in a case).....	.60	4.00	37.50
Extra " " 7 to 9 " " (250 " ").....	1.00	6.50	62.00
Mammoth " 9 to 10 " " (200 " ").....	1.50	10.00	95.00

Case Lots Sold at the 1000 Rate.

LONGIFLORUM GIGANTEUM

This type produces flowers of larger size, perfect form and of superior substance; stems marked black. It is later than Formosa Longiflorum, but it is highly thought of for late winter and Easter forcing.

	Doz.	100	1000
6 to 8 inch bulbs, (400 in a case).....	\$.60	\$4.00	\$38.00
7 to 9 " " (300 " ").....	1.00	6.50	62.00
9 to 10 " " (200 " ").....	1.60	12.00	112.00

Case lots supplied at the 1000 rate.

FREESIA REFRACTA ALBA.

(Ready for Delivery in August.)

Popular bulbs, flowering in the winter and spring. They force readily and can be had in bloom by Christmas if desired and a continuous display of bloom may be kept up through the winter by proper handling. The flowers—white with a yellow throat—are produced 6 to 8 on stems about 9 inches high, and are particularly useful for cutting, remaining in good condition if kept in water for two weeks.

Mammoth Bulbs, 1/4 in. up, 20c. doz., \$1.25 per 100, \$10.00 per 1000.

Extra Size Bulbs, 1/2 in. up, 15c. doz., \$1.00 per 100, \$8.50 per 1000.

The smaller trade sizes we no longer offer.

NEW GIANT WHITE FREESIA.

"FISCHER'S PURITY."

A distinct and greatly improved type producing large sprays of purest snow white flowers of immense size and deliciously fragrant; it is very free blooming and of great value for forcing for cut flowers.

California Grown "Purity" (August Delivery) Mammoth Bulbs, 35c. doz.; \$2.75 per 100; \$25.00 per 1000. Extra large Bulbs, 30c. doz.; \$2.25 per 100; \$20.00 per 1000.

European Grown "Purity" (September Delivery) First size Bulbs, 25c. doz.; \$1.50 per 100; \$12.50 per 1000.

Freesia Leichtlinii Major. The improved yellow Freesia, 20c. doz.; \$1.25 per 100; \$10.00 per 1000.

Henderson's Superior Northern Grown

...LILIUM CANDIDUM...

(Ready in August.)

Our Liliium Candidums are the thick, broad-petalled type so superior to the narrow-petalled south of France stock. The bulbs are plump, heavy and healthy.

This popular, fragrant, snow-white, hardy garden Lily is also known as "Annunciation Lily," and "Madonna Lily." It grows 3 to 4 feet high, and blooms in the open ground in June. When grown in bold masses or in rows these lilies are especially effective, the brilliancy of their snow-white flowers against surrounding greenery of shrubs, grass and trees is very telling. This lily dislikes being coddled, thriving best when it can remain undisturbed for years in good garden soil.

Price, 8 to 9 inch bulbs, 65c. doz.; \$4.50 per 100; \$40.00 per 1000.
 9 to 10 " " 75c. " \$5.00 " \$45.00 "



LILY OF THE VALLEY.

Expected for Shipment Early in November.

HENDERSON'S GIANT EARLY FORCING.

The finest grade of Lily of the Valley in the world for early winter flowering. They will bear twelve to sixteen large bells on strong stalks with splendid foliage even when forced for extra early; they are equally superior for later or successional crops. The pips are strictly 3-year old. They average large, plump and regular, with extra long roots.

Henderson's Giant Early Forcing (described above), \$1.75 per 100, \$16.00 per 1000, 10,000 lots at \$15.00.

Henderson's Large Flowering Hamburg. The florists' standard sort for late winter forcing. They are good keepers in cold storage. They will bear many bells on strong stalks with good foliage. 3 year old pips. \$1.50 per 100, \$13.50 per 1000, 10,000 lots at \$13.00 per 1000.

Fortin's Giant. The largest flowering type, for open ground only. 30c. per doz., \$1.75 per 100, \$16.00 per 1,000.

LILY OF THE VALLEY CLUMPS.

Large clumps for open ground planting 20c. each, \$1.75 doz., \$14.00 per 100.

SPIREA or ASTILBE.

LARGE IMPORTED CLUMPS SUITABLE FOR FORCING.

(For Shipment in November.)

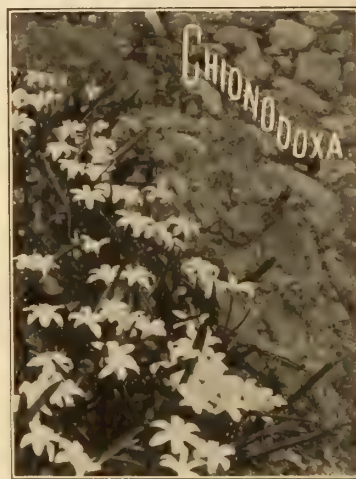
Gladstone. A new, large flowering Spiraea Japonica—an improvement over all other white-flowering Spiraeas—and one of the most beautiful winter and spring flowering pot plants grown; the immense masses of flowers are as white as snow, and are borne on erect, strong stalks 18 inches high. Well-grown plants bear 25 to 40 of these plum-like trusses, practically enveloping the plant with a feather-like lace. Imported clumps. \$1.50 per doz.; \$10.00 per 100; \$85.00 per 1000.

The New Pink Spiraea "Queen Alexandra." This beautiful new variety is of the same dwarf compact habit as Gladstone. It forces equally as well under the same cultural conditions, but blooms in to bloom a few days later. If slightly shaded, the color of the bloom the color will be brought out to perfection. Well-grown plants in bloom are very attractive and salable. Strong clumps in the new deep rosy pink strain. \$1.75 per doz., \$12.00 per 100, \$100.00 per 1000.





ALLIUM NEAPOLITANUM.



Prices.

MISCELLANEOUS BULBS.

	Doz.	100	1000
ACHIMENES mixed colors. Summer flowering.....	\$.35	\$ 2.25	\$ 20.00
AGAPANTHUS umbellatus (Blue African Lily).....	1.00	7.50	60.00
ALLIUM Aureum (Moly or Luteum), hardy golden yellow, Neapolitanum. Extra sized bulbs. A popular winter flowering variety, white flowers in clusters, largely forced by florists.....	.10	.30	2.50
Hermitti Grandiflorum. Extra sized bulbs. An im- proved large white flowering variety of the above....	.10	.50	4.50
Ostrowskianum. Rose colored flowers.....	.12	.85	7.50
	.15	1.00	8.00
ALSTROMERIA mixed colors, tuberous rooted lily-like plant.....	.25	1.50	12.00
AMARYLLIS Johnsonii, scarlet striped white..... ea. 25c.	2.25	18.00	
Bella Donna Major, rosy white fragrant flowers, ea. 12c.	1.25	8.00	
Formosissima, dark scarlet, free bloomer..... ea. 10c.	1.00	6.00	52.00
Equestris, orange scarlet with white throat..... ea. 12c.	1.25	10.00	
Vittata Hybrids, Mixed, Giant Flowering, large bulbs, grand varieties, each, 65c.....	6.50	50.00	
ANEMONE Double Poppy Flw'd (Coronaria fl. pl.) Mixed.....	.15	1.00	7.50
Single Poppy Flowered (Coronaria) Mixed.....	.12	.65	5.00
St. Brigid, mixed colors.....	.25	1.50	13.00
Fulgens. Dazzling scarlet flowers.....	.25	1.50	14.00
Fulgens Double, double scarlet.....	.20	1.25	10.00
Apennina Mixed Colors, blue, white and rose, hardy.....	.12	.65	5.50
Blanda, single flowers, blue shaded white.....	.15	1.00	9.00
ARUM Dracunculus, showy pot plant, palm-like leaves....	.65	4.50	40.00
Cornutum, "Red Calla," red flowers spotted black....	.65	4.50	40.00
Sanctum, "Black Calla," blackish purple.....	.75	5.00	48.00
ASTILBE, see Spirea, page 11.....			
BABIANAS Mixed Colors, winter and spring flowering....	.20	1.25	11.00
BLOOD Root (Sanguinaria Canadensis Major) hardy, white	.60	4.50	38.00
BRODIAEAS Mixed Colors, half hardy flowers in clusters....	.12	.85	6.00
BULBOCODIUM Vernum, hardy spring blooming.....	.35	2.50	22.00
CALLA ETHIOPICA or WHITE CALLAS, dry bulbs. See page 1.			
The Godfrey.....	1.35	10.00	90.00
Little Gem or Tom Thumb, about 12 inches high....	.35	2.50	23.00
Ellottiana, largest 3 year old bulbs, rich yellow, foli- age spotted white, ea. 35c.....	3.75	30.00	
Alba Maculata, white, purple throat, leaves spotted....	.35	2.50	23.00
Calla, Black and Red, see "Arums".....			
CALOCHORTUS (Mariposa Tulips), Mixed Colors.....	.20	1.25	11.00
CAMASSIA Esculenta, hardy, blue flowers on 2 to 3 ft. spikes'	.15	.75	6.00

Prices.

MISCELLANEOUS BULBS.

	Doz.	100	1000
CHINODOXA, all cultivated extra sized bulbs.			
Lucillae, "Glory of the Snow".....	\$.15	\$ 1.00	\$ 8.50
Gigantea, blue and white, large flowers.....	.15	1.00	8.50
Sardensis, Gentian blue, flowers very freely.....	.12	.85	7.50
COLCHICUM Autumnale Mixed, "Autumn Crocus"....	.30	2.00	18.00
" Parkinsoni, white, checkered rose and purple.....	.20	1.25	10.00
Speciosum, magenta-rose.....	.25	1.50	12.00
Zonatus, lavender with orange zone.....	.25	1.50	12.00
Crocus Autumn Flowering, mixed.....	.20	1.25	10.00
COOPERIA Drummondii, white star-shaped flowers.....	.25	1.50	12.00
CROCUS—Extra large bulbs, not seconds.			
Mixed All Colors, large bulbs, not seconds.....	.08	.40	3.00
Striped and Variegated, large bulbs, not seconds.....	.09	.40	3.50
Mixed Blue and Purple, large bulbs, not seconds.....	.09	.40	3.50
Mixed White Varieties, large bulbs, not seconds.....	.09	.40	3.50
Yellow 1st size, rich golden yellow, not seconds.....	.12	.85	7.50
Mammoth Yellow, largest bulbs, large yellow flowers....	.15	1.00	9.00
CROCUS—Large Named. Picked Bulbs throwing several flowers each. Not seconds that can be quoted cheaper.			
Albion, violet striped lavender and white.....	.10	.65	5.50
Baron von Brunow, deep rich purple.....	.10	.65	5.50
Cloth of Gold, golden yellow striped bronze.....	.10	.65	5.50
Cloth of Silver, silvery white striped lilac.....	.10	.65	5.50
David Rizzio, large dark purple.....	.10	.65	5.50
Fantasy, lavender striped purple.....	.12	.85	7.00
Hero, deep purple.....	.12	.85	7.00
May, white.....	.12	.85	7.00
Mammoth Yellow, large golden yellow flowers.....	.15	1.00	9.00
Mont Blanc, white.....	.10	.65	5.50
Ne Plus Ultra, purple variegated white.....	.10	.65	5.50
Queen of the Netherlands, pure white, free.....	.10	.65	5.50
Surprise, white striped indigo.....	.12	.85	7.00
Triumph, blue shaded violet.....	.12	.85	7.00
Giant Flowering Seedlings, Mixed Colors.....	.12	.85	7.00
Autumn Flowering, see "Colchicum".....			
	Each.	Doz.	100
CROWN Imperials Mixed, bell-shaped flowers, on tall spikes.	\$.10	\$ 1.00	\$ 7.50
Aurora, large red flowers.....	.15	1.50	10.00
Sulphurea, sulphur yellow flowers slightly striped red....	.15	1.50	10.00
Crown upon Crown, several whorls of red flowers....	.15	1.50	10.00
CYCLAMEN Persicum Giganteum Mixed, large flowers....	.10	1.00	8.00
" " Roseum, rose colored flowers.....	.15	1.50	10.00
" " Rubrum, crimson colored flowers....	.15	1.50	10.00
" " Album, pure white flowers.....	.15	1.50	10.00
" " Salmon Colored (new).....	.20	2.00	16.00
" " Papilio mixed colors, new Butterfly Cyclamens.....	.20	2.00	16.00

6 bulbs of one variety sold at dozen rates; 20 at 100 rates; 250 at 1,000 rates. Postage will be extra on bulbs desired by mail.



MISCELLANEOUS BULBS.

	Prices.		
	Doz.	100	1000
DIELYTRA Spectabilis. "Bleeding Heart".....	\$.75	\$5.00	\$45.00
ERANTHUS Hyemalis (Winter Aconite), hardy, yellow...	.12	.65	5.00
ERYTHRONIUM.			
Dens-Canis Grandiflora, mixed.....	.20	1.25	10.00
Americanum, yellow.....	1.00	7.00	
FREESIA. (See page 11.)			
FRITILLARIA, Meleagris Mixed, bell-shaped flowers....	.12	.85	7.50
GESNERAS Mixed, summer flowering.....	1.00	8.00	
GLADIOLUS Dwarf Early Flowering Mixed.....	.12	.65	4.50
The Bride (Colvilli Alba), pure white flowers.....	.12	.85	7.00
Blushing Bride, white with crimson flakes.....	.15	.85	6.00
Peach Blossom, blush blotched rose.....	.20	1.25	9.00
	Each	Doz.	100
GLOXINIAS, Large Flowering Mixed.....	.08	.75	6.00
HEPATICAS			
Angulosa, hardy, sky blue flowers.....	.08	.75	5.00
" " Alba, white.....	.10	1.00	8.00
" " Rubra, red.....	.10	1.00	8.00
	Doz.	100	1000
HYACINTHUS Grape Blue, flowers like a bunch of grapes.	.10	.50	3.50
Heavenly Blue Grape. Large, gentian blue.....	.12	.85	7.50
Grape White, similar to above, with white flowers....	.12	.75	6.00
Feathered, plume-like spikes of bloom.....	.10	.50	4.50
IRIS ALATA, "Scorpion Iris," lilac yellow and blue....	.25	1.85	17.00
English, Mixed Colors (I. Anglica), hardy, fine for pots.	.12	.75	6.00
Peacock (Pavonia), white with blue spots.....	.12	.75	6.00
Susiana (Mourning Iris), bluish veined brown.....	.75	6.00	
Spanish Mixed (I. Hispanica).....	.10	.30	2.00
IRIS KAEMPFERI. (Japan Iris.)	Each.	Doz.	100
Mixed large flowering singles and doubles.....	.10	1.00	8.00
12 EXTRA FINE LARGE FLOWERING SINGLE VARIETIES.			
A Iso-no-nami. Silvery white, veined violet.....	.12	1.25	10.00
B Date-dogu. Rich violet-purple.....	.12	1.25	10.00
C Hano-no-nishiki. Violet-purple with white veins.	.12	1.25	10.00
D Shippo. Light lilac, densely veined purple.....	.12	1.25	10.00
E Shishi-ikari. White, densely veined dark purple.	.12	1.25	10.00
F Gekka-no-nami. A very early pure white.....	.12	1.25	10.00
G Shi-un-ryo. Ground color light, veined and suffused violet.....	.12	1.25	10.00

MISCELLANEOUS BULBS.

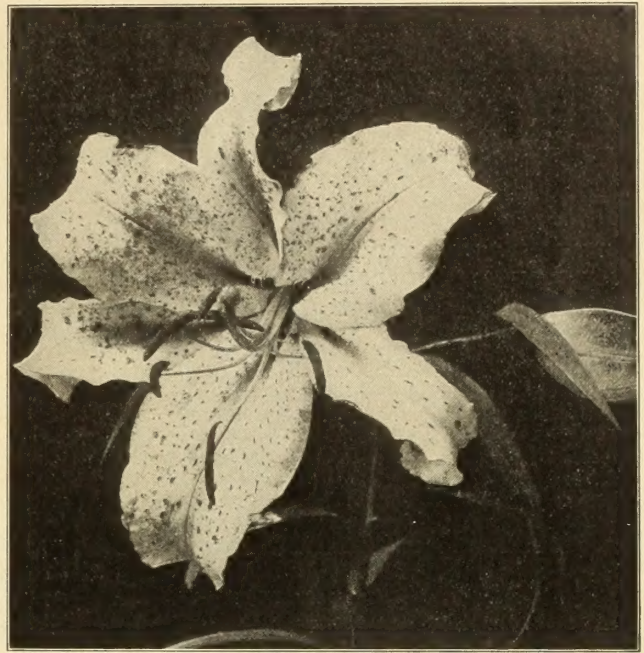
	Prices.		
	Each.	Doz.	100
IRIS KAEMPFERI (Japan Iris).—Continued			
H Shuchiukwa. Crimson-purple, white veins and centre.....	.12	1.25	10.00
I Kokirin. Rose tinted white, veined violet purple.	.12	1.25	10.00
J Sumida. White, faintly veined with bright violet-purple.....	.12	1.25	10.00
K Washi-no-wo. Mottled violet-purple, shading to bright violet at centre.....	.12	1.25	10.00
L Oku-muyajo. Light blue, profusely marked white.	.12	1.25	10.00
The Collection of above twelve single Japan Iris one root, each \$1.25.			
12 EXTRA FINE LARGE FLOWERING DOUBLE JAPAN IRIS.			
M Yomo-no-umi. The finest double white.....	\$.12	\$1.25	\$10.00
N Koki-no-iro. Light violet with white veins.....	.12	1.25	10.00
O Oniga-Shima. Violet with white veins and center.	.12	1.25	10.00
P Yedo-jiman. Rich royal purple.....	.12	1.25	10.00
Q Uchiu. Bright crimson-purple; white veins....	.12	1.25	10.00
R Otorige. Blue, with white veins, white centre....	.12	1.25	10.00
S Renjo-no-toma. Light lilac, suffused with violet.	.12	1.25	10.00
T Mana-dsuru. White, with faint violet markings.	.12	1.25	10.00
U Uji-no-hotaru. Bright violet-purple, shaded blue.	.12	1.25	10.00
V Gabisan. Violet bordered white.....	.12	1.25	10.00
W Naden. Bright royal purple.....	.12	1.25	10.00
X Sekizan. Light lilac, veined deep purple.....	.12	1.25	10.00
The collection of above twelve Double Japan Iris one root each, \$1.25.			
IRIS GERMANICA, Large Flowering, Mixed Colors....	.10	.85	6.00
IRIS GERMANICA and ALLIED SPECIES.			
Atropurpurea (Syn. Kochii). Standard and falls both rich claret purple.....	.15	1.50	12.00
Amas (Syn. Macrantha). Giant-flowered, standards rich blue; falls violet.....	.15	1.50	12.00
Albert Victor. Standard light blue; falls lavender.....	.15	1.50	12.00
Aurea. Standard and falls chrome yellow.....	.15	1.50	12.00
Bleu Parfleur. White spotted and bordered with dark blue.	.15	1.50	12.00
Dalmatica (Syn. Princess Beatrice). Standard lavender; falls deeper lavender.....	.20	2.00	15.00
Darius. Standards canary yellow; falls lilac margined white.	.15	1.50	12.00
Florentina. Standards creamy white; falls white tinged lavender.....	.15	1.50	12.00
Florentina Silver King. A large flowering pure white variety of the above.....	.15	1.50	12.00
Frederick. Standards pale lavender; falls lavender barred with brown.....	.15	1.50	12.00
Gracchus. Standard yellow; falls crimson reticulated white.....	.15	1.50	12.00

6 bulbs of one variety supplied at dozen rates; 25 at 100 rates; 250 at 1,000 rates. Postage will be extra on bulbs desired by mail.

LILIES.....

L. Harrisii and L. Candidum are ready for shipment in August; L. Longiflorum last of September or early in October; all other sorts in November.

	Prices.		
	Each	Doz.	100
AURATUM, white, with crimson spots, yellow stripe.....			
First Size Bulbs, 8 to 9 inch.....	.10	1.00	7.50
Extra Large Bulbs, 9 to 11 inch.....	.15	1.50	12.00
Mammoth Bulbs, 11 to 13 inch.....	.25	2.50	18.00
Platypetalum, similar to Auratum, but larger flowers..	.25	2.50	20.00
Vittatum Rubrum, white spotted red, crimson stripes..	.45	4.50	35.00
Pictum, white spotted red, yellow and red stripes.....	.20	2.00	16.00
Witteii, white with a wide yellow stripe through each petal	.45	4.50	35.00
BERMUDA EASTER LILY. (See page 10.)			
BROWNII, white inside, exterior brownish purple.....	.35	3.50	25.00
CANDIDUM. (See page 11)			
CANADENSE, bright yellow with spots of red, large bulbs...	.10	1.00	6.00
Flavum, pure yellow.....	.10	1.00	6.00
Rubrum, crimson, dark spots.....	.10	1.00	6.00
COLCHICUM (Monodelphum) rich citron, spotted black.....	.25	2.50	18.00
CROCEUM (Bulbiferum) golden, slightly tinted scarlet.	.10	1.00	8.00
ELEGANS Erectum Robustum, orange, spotted scarlet....	.08	.75	6.00
Incomparable, deep crimson, spotted with black.....	.12	1.25	10.00
EXCELSUM.....	.50	5.00	35.00
HARRISII. (See page 10.)			
HENRYI, The "Yellow Speciosum," apricot yellow.....	.50	5.00	40.00
HUMBOLDTII (Bloomerianum) golden spotted purple..	.25	2.50	20.00
KRAMERI, a soft rose color.....	.15	1.50	12.00
LANCIFOLIUM OR SPECIOSUM.			
Album, white, 1st size bulbs, 8 to 9 inches.....	.15	1.50	11.00
Extra Size Bulbs, 9 to 11 inches.....	.20	2.00	14.00
Roseum, white, shaded and spotted rose, 1st size, 8 to 9 in.	.10	1.00	7.50
Extra Size Bulbs, 9 to 11 inches.....	.12	1.25	9.00
Rubrum, white, shaded deep rose and spotted red.			
First Size Bulbs, 8 to 9 inches.....	.10	1.00	7.50
Extra Size Bulbs, 9 to 11 inches.....	.12	1.25	9.00
Melpomene, rich crimson, heavily spotted, 1st size 8 to 9 in.	.12	1.25	8.00
Extra Size Bulbs, 9 to 10 inches.....	.15	1.50	10.00
Magnificum, new; extra large flowers, red spotted crimson	.15	1.50	11.00
Extra Large Bulbs, 11 to 13 inches.....	.20	2.00	15.00
LONGIFLORUM and Varieties. (See page 10.)			



	Each.	Doz.	100
MARTAGON, purplish red, spotted with dark purple.12	1.25	8.00
PARDALINUM, scarlet, shading to yellow, spotted purple	.10	1.00	8.00
PARRYI, lemon yellow, fragrant.40	4.00	
PHILADELPHICUM, bright orange red, spotted with purple.	.10	1.00	6.50
RUBELLUM, delicate pink, one foot early.....	.15	1.50	12.00
SPECIOSUM (See Lancifolium.).....			
SUPERBUM (Turks Cap Lily) orange, tipped and spotted red	.10	1.00	6.00
TENUIFOLIUM, small but numerous fiery-scarlet flowers....	.10	1.00	7.00
TIGRINUM, Splendens (Imp. Tiger Lily) orange red, spotted	.08	.75	5.00
Flora Plena (Double Tiger Lily) orange red, spotted.....	.10	.85	6.00
UMBELLATUM, mixed colors.....	.10	.85	6.00
WALLACEI, red orange, raised maroon dots.....	.08	.75	6.00
WASHINGTONIANUM, white, tinted with purple and lilac	.25	2.50	20.00

SPECIAL IMPORT OFFER OF AZALEAS.

(Expected for Shipment about October 20th.)

We offer for delivery in the Fall of 1911, f.o.b. New York City, Indian Azaleas, double and single, all named varieties, leading market kinds, shapely plants, well headed, at the prices quoted below. This is a specially low import offer, and your early order is solicited. It is to your interest to order now and take advantage of the low prices.

These plants will be carefully packed and can be safely sent by freight in the fall to any part of the country. We offer the following varieties: Mme. Van der Cruyssen, Bernhard Andrea Alba, Deutsche Perle, Mme. C. Van Langenhove, Vervaeneana, Empress of India, Helen Thielman, and Simon Mardner.

ORDER AT ONCE TO SECURE THESE RATES.

	Per doz.	Per 100.
10 to 12 inch heads.....	\$4.50	\$35.00
12 to 14 " ".....	6.00	50.00
14 to 16 " ".....	7.50	60.00

IMPORTANT NOTICE.

On account of the lateness of Easter next year—April 7th—we will not import any Azaleas for spring sales. It is imperative, therefore, to purchase the coming Fall. Please order as soon as this list arrives; importations will be based strictly on advance orders booked before September.



Henderson's Modern HERBACEOUS PEONIES.

A SELECTION FROM THE WORLD'S NEWEST AND BEST VARIETIES.

OUR DEPARTURE IN OFFERING PEONIES: It is the rule among most sellers of Peonies to send out divided roots, that is older plants cut into several 3 to 5 crowned roots. These of course can be sold at a lower price, but all Peony purchasers should know that normal or characteristic flowers of maximum size will not be produced on these divided roots for two or three years. As most of our customers prefer to pay a little more and get older undivided roots therefore we are this year offering roots of 1, 2 and 3 years growth from the divided stage. These according to age, will give a greater quantity of perfect bloom the succeeding season if planted, between September 1 and November 1; the earlier the better so they can make roots in the fall.

PRICE EACH.	1 year old	2 year old	3 year old
Achille. Opens flesh pink finishing blush white. Early mid-season.....	\$.65	\$1.00	—
Alba Sulphurea. White guards, lemon yellow center, fragrant. Early midseason.....	.55	1.00	\$1.35
Albert Crousse. Fresh salmon-pink full peony formed flower.....	1.35	2.00	2.75
Ambroise Verschaffelt. Deep purplish crimson; large cup shaped bloom. Late bloomer.....	.45	.65	1.35
Anemoneflora Rubra. Broad guards surrounding the center mass of narrow petals. All dark crimson. Midseason.....	.65	1.00	1.35
Augustine D'Hour. Brilliant violet purple; fine shaped flower. Late midseason.....	1.00	1.35	2.00
Beranger. Mauve pink with brighter center and deeper shadings. One of the latest.....	1.00	1.35	2.00
Boule De Neige. White with sulphur shadings. Center border with carmine.....	.65	1.35	—
Candidissima. Creamy white with sulphur yellow center slightly tinted flesh. Midseason.....	.65	1.00	1.35
Couronne D'Or. Snowy white with yellowish reflex; a few of the center petals edged with carmine.....	.65	1.00	1.35
Czarina. Deep rose pink, very fragrant, enormous very double long stemmed flowers. Late.....	.65	—	—
Delicatissima (Floral Treasure). Clear delicate pink, shading light at center; very fragrant.....	.65	1.00	1.35
Dr. Bretonneau. Dull pink, center tipped with creamy white and an occasional crimson fleck. Early to mid-season.....	.65	1.35	—
Duke of Wellington. Large well formed flower of sulphur white stems firm and long; very fragrant.....	.55	1.00	1.35
Duchesse De Nemours. Sulphur white with greenish reflex. Fades to pure white.....	.55	1.00	1.35
Eduis Superba. Pink slightly violaceous intermixed with whitish petals. Early.....	.45	—	1.35
Felix Crousse. Brilliant red with ruby flamed center. Large full ball-shaped bloom. Late midseason.....	1.00	—	2.00
Festiva Maxima. Enormous flowers on tall strong stems white with an occasional purplish spot on center petals. Very fragrant. Early.....	.65	1.00	1.35
General Bertrand. Solferino-red; large compact bloom. Midseason.....	.65	—	1.35
Henry Demay. Violaceous purple lighted with whitish reflex. Superb.....	1.00	1.75	2.00
La Tulipe. Delicate rose fading to creamy white. Center petals tipped carmine. Outside of guards striped carmine. Late.....	.55	1.00	1.35
Livingstone. Soft rosy-pink with silvery reflex. Large full bloom on long strong stems.....	1.00	1.35	2.00
Louis Van Houtte. Bright violaceous red; very fine shaped flower. Late midseason.....	.55	1.00	—
Mme. Barillet Deschamps. Tender rose-pink bordered with white and darkened with deeper rose tints. Late mid-season.....	.65	1.00	1.35
Mme. Bollet. Clear rose with white reflex ligulated with carmine. Very late.....	.50	.65	1.35
Mme. Calot. Pinkish white tinted with flesh color. A fine variety. Midseason.....	.65	—	1.35
Mme. Chaumy. Soft pink shaded with bright rose. Clearer on border of petals. Midseason.....	.45	.65	1.35
Mme. Coste. Tender rose tinted glossy white; tufted center; very chaste. Midseason.....	.45	.65	1.35
Mme. Crousse. Snow white, center petals edged with bright carmine; extra fine. Midseason.....	.65	1.00	1.35
Mme. De Bollemont. Soft glossy lilaceous pink with silvery border. Large full bloom.....	.65	1.00	1.35
Mme. De Galhau. Soft flesh-pink shaded glossy salmon; silvery reflex. Late midseason.....	1.00	1.35	2.00

PRICE EACH.	1 year old	2 year old	3 year old
Mme. De Verneville. Very broad guards of sulphur-white; center rosy white occasionally touched carmine.....	\$.65	\$1.00	\$1.35
Mme. Ducl. Bright silvery pink tinted and marked with salmon, silvery reflex. Midseason.....	.65	1.00	—
Mme. Forel. Glossy pink with silvery reflex and deeper rose center; enormous full bloom. Late.....	.65	1.00	1.35
Mme. Muysart. Large well shaped flowers of delicate china pink. Late.....	.45	.65	1.35
Mlle. Leonie Calot (Syn. M. Chas. Leveque). Soft salmon flesh with occasional tips of carmine; fragrant. Late.....	.65	1.00	1.35
Mlle. Rosa Rendatler. Soft glossy pink with lilac reflex; Beautiful. Midseason.....	.65	1.00	—
Marguerite Gerard. Immense flat flowers with broad petals; flesh white with creamy center. Late midseason.....	1.35	2.00	2.75
Marie Jacquin. Creamy white tinted flesh; large globular bloom; extra fine.....	.65	—	1.35
Marie Lemoine. Sulphur white shaded with pink and chamois. Enormous bloom. Very late.....	1.00	1.35	2.00
Meissonier. Guard petals of brilliant purple amaranth. Center deep crimson; enormous long stemmed bloom. Late.....	.65	1.00	1.35
Modele de Perfection. Flesh pink marked with bright rose and bordered silvery rose. Some salmon shaded petals intermixed. Extra fine late variety.....	1.35	2.00	4.00
Modeste Guerin. Bright rose pink with purplish cast in center; very fragrant. Midseason.....	1.00	—	2.00
Mons. Barrall. Soft clear pink. Large full fragrant bloom on long stems. Very late.....	.65	1.00	1.35
Mons. Jules Elie. Finest glossy pink shading to deeper rose at base. Immense full bloom. Midseason.....	1.00	—	—
Mons. Paul Du Ribert. Violaceous red, almost black.....	.65	1.00	—
Philomele. Guards bright rose, narrow center petals of yellow shaded bright rose and bordered carmine. Mid-season.....	.65	1.00	—
President De Montzay. Deep pink and mauve; broad imbricated petalage. Late midseason.....	.45	1.00	—
Rubra Superba (Richardson's). Brilliant deep crimson; very fragrant; the latest of all peonies to bloom.....	.65	1.35	2.00
Souvenir De L'Exposition Universelle. Clear cherry with silvery reflex. Fine full bloom. Late midseason.....	.65	—	1.35

PEONY OFFICINALIS.

GRANDMOTHER'S "PINYS."

These favorites of old-fashioned gardens are the earliest of all peonies to flower. They are vigorous, producing freely large, rather coarse flowers with a strong odor.

	Price, one year old roots	
	Each.	Doz.
Officinalis Alba. Double rosy-white flowers, fading white.....	60c.	\$6.00
Officinalis Rosea. Double purplish-rose.....	30c.	3.00
Officinalis Rubra. Glowing deep crimson, double flowers.....	30c.	3.00

JAPANESE SINGLE PEONIES.

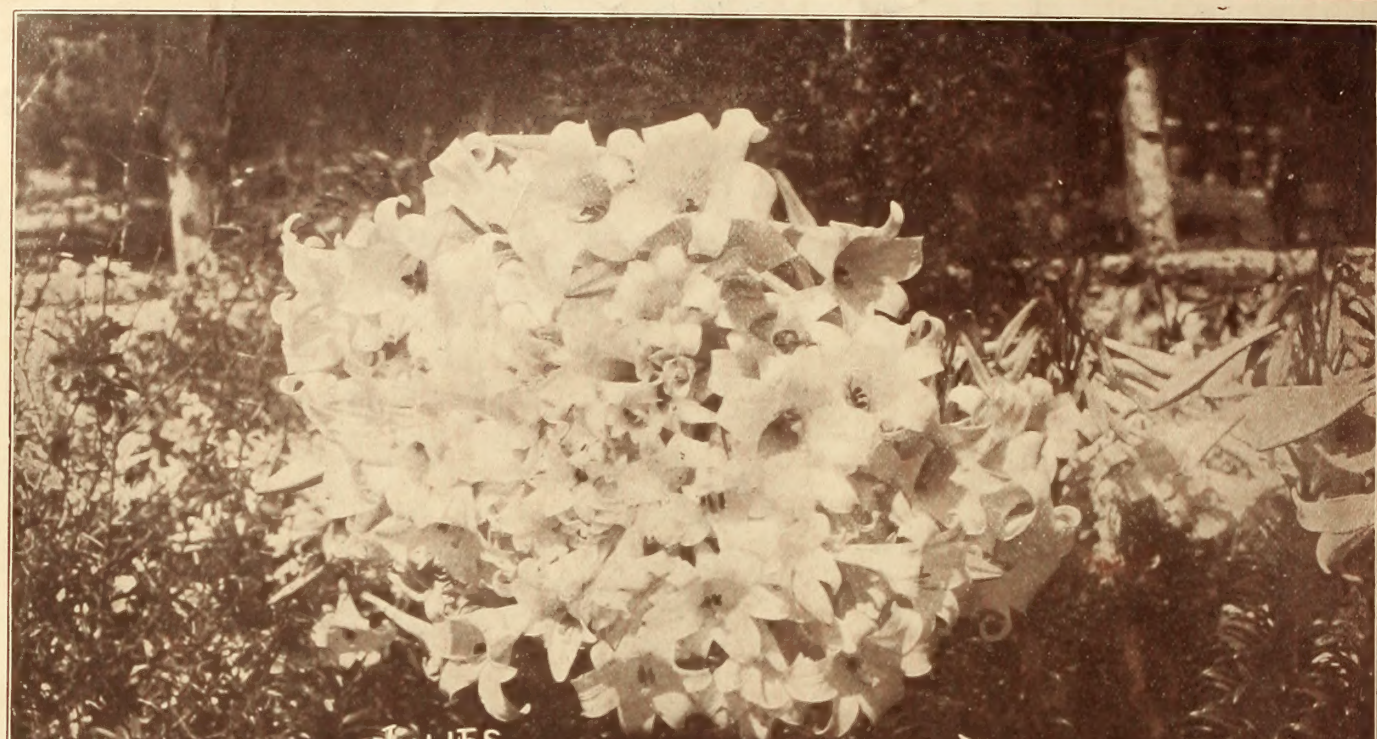
Large saucer-like flowers containing a tuft of yellow filaments and stamens.

	Price, each.	
	1 year old	2 year old
Japanese Single White	\$.75	\$1.25
" Lavender75	1.25
" Crimson75	1.25
" Pink75	1.25

Henderson's Leaflet "Herbaceous Peonies—Planting and Cultivation" free to Peony purchasers if asked for.



63.61



BERMUDA EASTER LILIES.

196 FLOWERS ON ONE PLANT.

1911
 HENDERSON'S
BULB-BARGAINS

FOR THOSE WHO PLACE THEIR ORDERS
 ❀ THIS SPRING ❀
 FOR SHIPMENT DURING SUMMER AND FALL

👉 EVERYTHING TO GAIN--NOTHING TO LOSE 👈
 by placing your order NOW. Should anything be offered
 later, by us, at a lower price
 WE WILL GIVE YOU THE LOWER RATE

Peter Henderson & Co.
 35 & 37 CORTLANDT ST., NEW YORK.